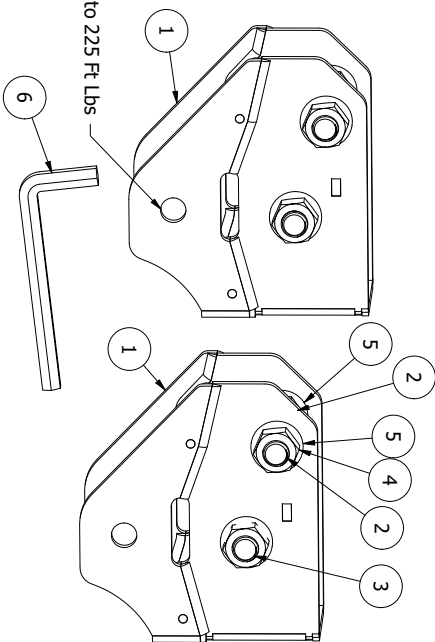
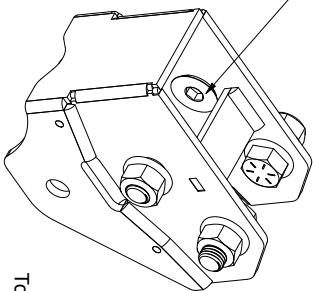
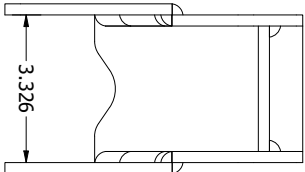
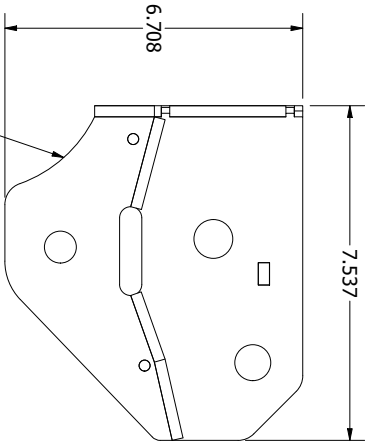


Kit Stock# 105070 Shipper R2

Fits 2005 + Superduty
Radius Arm Drop 2.5"
Gets you 5 degrees of castor at 2.5" of Lift
will not require Sway Bar Relocation to
keep the sway bar from hitting the Coil spring
Packaged By _____ Label# 910442

- Install for Radius arm Drop Brackets when not doing a full suspension kit.
(Be extra careful the axle is heavy and common sense is not as common as one might think)
1. Lift truck off ground using the standard lifting precautions, if you are not familiar with how to safely pick up a truck this could be beyond your install skills.
 2. On the drivers & passenger side, Remove only the nut from the bolts in radius arms at the frame, but leave the bolts in the arm.
 3. Loosen the Passenger radius arm front axle top bolt but leave the top Passenger radius arm front axle top bolt in.
 4. Remove the passenger side, front lower radius arm bolt & nut at the axle, now the passenger radius arm should have 2 bolts in it.
 5. With a jack or ratchet strap, gently lift up on the cast part of the rod on the front of the axle, being mindful not to use too much force as to bend the tie rod. - Lifting the FRONT of the axle up will lower the rear of the radius arms. * Lift until you can easily slide out the frame bolt from rear driver side radius arm. Note - Use light lifting force, you are not picking up the truck with the tie rod, just overcoming the spring pressure on the axle to get the bolt out.
 6. After the bolt is out of the drivers frame end of the radius arm, Using reasonable force, lift the front of the axle higher to get the back of the arm to get farther from the frame to get room for the Drop bracket. Since there is 2 bolts on the passenger side it will keep help keep the axle location while letting the axle rotate.
 7. Install Driver Drop Brackets and torque frame to bracket bolts.
 8. Reinstall Driver arm in drop Brackets - all 3 bolts should be installed with rear bolt loose not snug.
 9. Slide out the rear frame bolt from passenger side radius arm and let the arm down to rest on the axle.
 10. Install Passenger Drop Brackets and torque frame to bracket bolts.
 11. Reinstall Passenger arm in drop Brackets with all three bolts - loose not snug.
 12. Make sure all 6 radius arm bolts are in, put the truck back on the ground on its own weight and then torque the 6 radius arm bolts. Rubber bushings need to be torqued resting at the position they will be used.
 13. Re-torque at 1000 miles or if you feel any popping



PARTS LIST

ITEM	QTY	Qty Included	PART NUMBER	DESCRIPTION	Torque
1	2		580188	2.5" Radius Arm Frame Drop	
2	4		550176	3/4-10 x 1 1/2in Long Grade 8 Hex Bolt	
3	4		550263	3/4-10 x 1-1/2in Long Zinc Allen Flat Head	
4	8		550306	3/4-10 Grade C Top Lock Nut	225 ft lbs
5	12		550506	3/4-SAE Grade 8 Washer	
6	1		501240	1/2in Hex Key Allen Wrench	

4

3

2

1

DRAWN 11/7/2018
DAVE
CHECKED
QA
MFG
APPROVED
TITLE
Copyright Information
Copyright protection applies to this document.
Do not share with any third party.

One Up Offroad

DWG NO
105070 2.5in 5D RAD

SCALE

.3 REV

SIZE

B

SHEET 1 OF 9